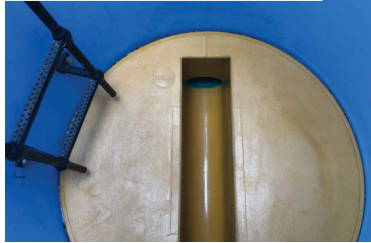


PVC Hybrid Manholes

Cost-Effective & Corrosion-Free Sanitary Sewer Solutions

PVC pipe meets lined precast concrete in this corrosion-resistant manhole system by Geneva Pipe and Precast. Our PVC Hybrid Manholes feature a simple, cost-effective, modular design that meets all structural and corrosion resistance requirements for use in municipal sewer systems throughout North America. It is available for both new construction and rehabilitation projects and comes with a 50-year warranty and 100-year design life.

Each PVC Hybrid Manhole System includes an FRP lined reinforced concrete base and lid and a PVC liner, complete with a pre-installed ladder. Installation is quick and easy and labor can be 100% self-performed in the field.



Advantages

- Corrosion resistant
- Economical solution
- Rated for H20 traffic loading
- DR51 C-900
- One-piece riser eliminates the need for stacking sections
- Watertight joints
- Lined manhole base and lined lid
- Pre-installed ladder
- Eliminates the need to work in confined space during installation
- 50-year warranty
- 100-year design life

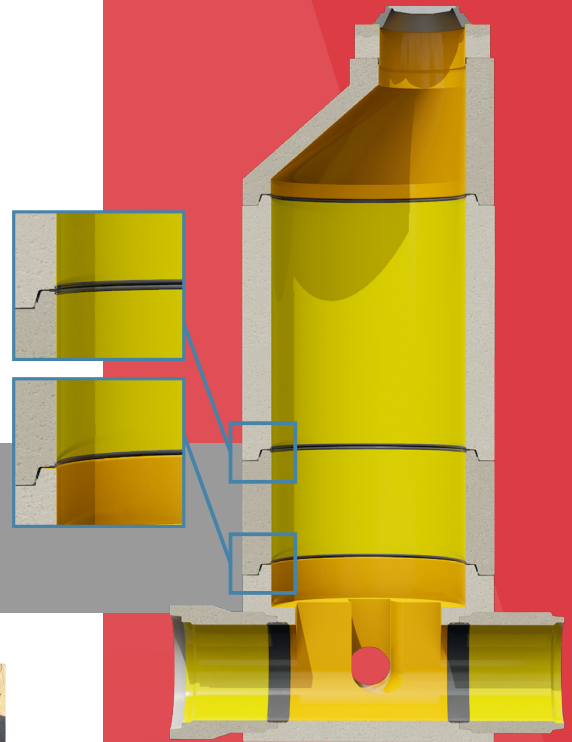


Perfect Lined Manholes

Cost-Effective & Corrosion-Free
Sanitary Sewer Solutions

Perfect Lined Manhole is a reinforced precast concrete manhole that meets ASTM C478 and is lined with high-quality synthetic polymer liner, which protects the concrete from Microbial Induced Corrosion (MIC) when exposed to municipal and industrial wastewater. The entire structure of the monolithic manhole base is reliably leak-proof, and custom invert channels can accommodate pipe of almost any configuration or size.

Perfect Lined Manhole is easy to maintain and provides a high load-bearing capacity under static and dynamic loads. Setting a new quality standard for wastewater systems, Perfect Lined Manhole is available in standard sizes 48" to 96" in diameter.



Rubber gaskets provide a watertight seal between sections with no field welding required.

Advantages

- Corrosion resistant
- Watertight / leak-proof
- High abrasion resistance
- High load capacity
- Smooth liner surface
- Easy inspection
- Low maintenance
- 100+ year design life
- Quick and easy install with no field welding

